

# RULES AND REGULATIONS

Preserve Hours: Dawn till Dusk

- Follow Posted Signage at All Times
- Dogs Must Be on a Leash at All Times
- Pack Out All Trash and Dog Waste
- Stay On Marked Trails
- The Following Are Prohibited:
  - Hunting
  - Excessive Noise
  - Alcohol and Glass Containers
  - Camping and Fires
  - Collecting of Plants, Animals or Artifacts
  - Overnight Parking
  - Mountain Bikes
  - All-Terrain Vehicles
  - Horseback Riding

**IN THE EVENT OF AN EMERGENCY  
CALL 911**

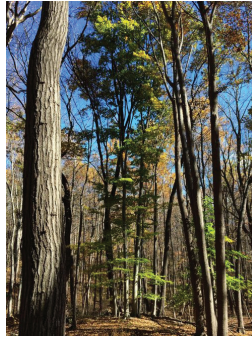
Limestone Ridge, a 97-acre preserve, is a forested tract of land immediately south of the Paulins Kill. The preserve hosts various deciduous and evergreen species, dominated on the north by hemlocks. Large tulip poplars, successional black birch, and mature oak, hickory and maple trees are present. A perennial stream flows within a deep ravine on the eastern end of the property.

The topography throughout is the characteristic “pinnacle and trough” terrain found in areas underlain by limestone within the Kittatinny Valley, wherein resistant strata of limestone stand out in bold relief while less resistant beds weather into narrow trough-like alleys. The western edge of the preserve is bounded by a steep escarpment that exposes the carbonate bedrock. Another steep escarpment is found on the northern side facing the Paulins Kill. A third escarpment bounds the stream valley in the eastern part of the preserve. Wetlands make up a minor part of the preserve and are found principally along the northwestern edge along Hope Road.



**ADDRESS FOR PARKING LOT:**  
23 Hope Road, Blirstown NJ 07825\*  
\*parking lot of Givens-Belet American Legion Post

**GPS COORDINATES:**  
40.9748, -74.9575



*Bear illustration by Jennifer Ramirez, 2019*

## RIDGE AND VALLEY CONSERVANCY



PO Box 146  
16 Main Street, Blirstown, NJ 07825  
(908) 362-7989  
info@ridgeandvalleyconservancy.org

### ABOUT US

Ridge and Valley Conservancy (RVC) is a private, non-profit land trust that preserves natural lands in northwestern New Jersey. We strive to practice sound ecological management of the lands we've protected, safeguarding sensitive habitats and the native species that inhabit them. Many RVC preserves have hiking trails, and we offer nature education, guided hikes, and other special events for the community and for schools. Learn more about us at [ridgeandvalleyconservancy.org](http://ridgeandvalleyconservancy.org).

Scan this QR code to  
see the trail map on  
your device.



### SUPPORT RVC!

Text MYRVC to 44-321  
to donate  
and help us care for  
special places like this.

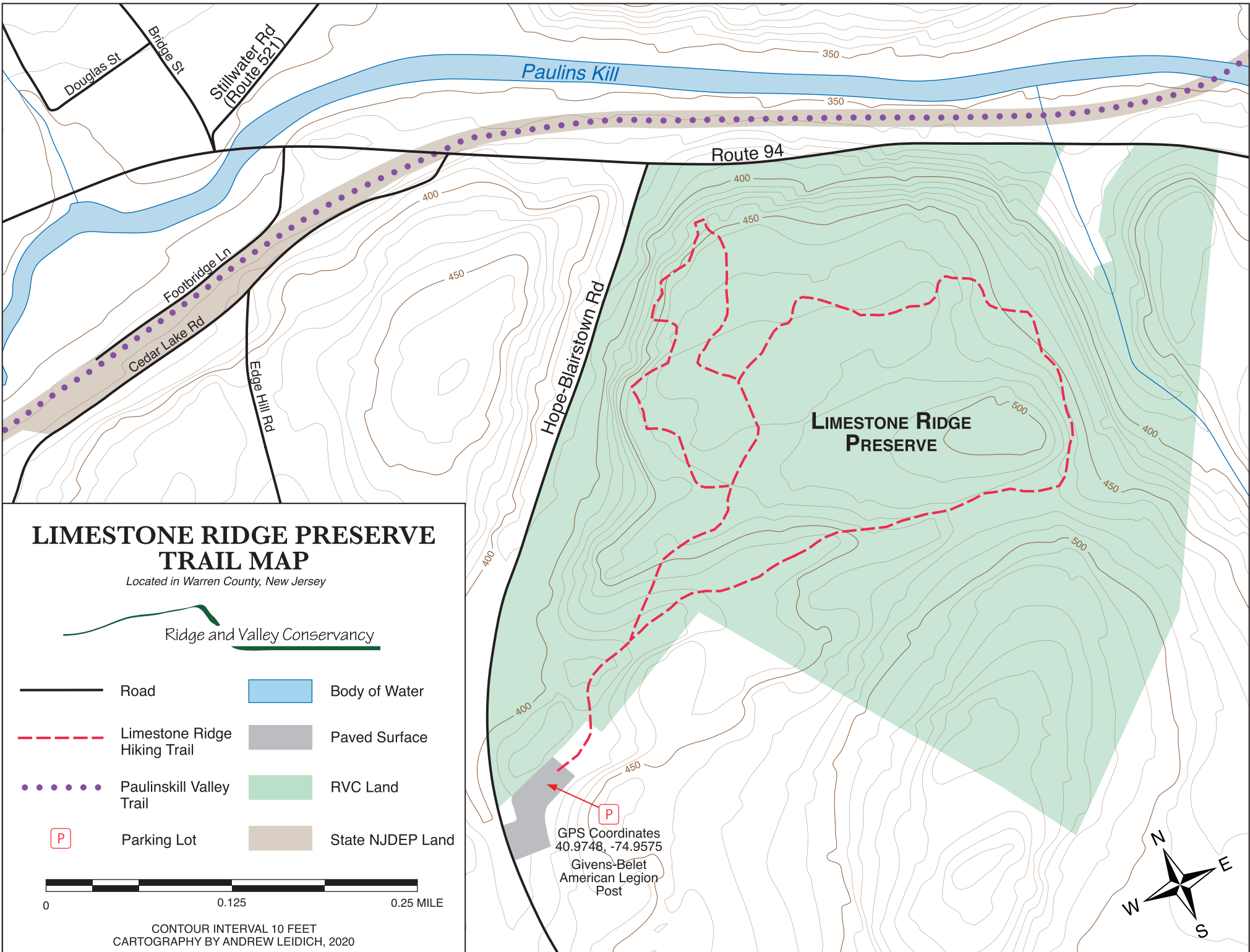
Thank You!

# LIMESTONE RIDGE PRESERVE

## TRAIL MAP



Ridge and Valley Conservancy



# LIMESTONE RIDGE PRESERVE TRAIL MAP

Located in Warren County, New Jersey



- |  |                              |  |                  |
|--|------------------------------|--|------------------|
|  | Road                         |  | Body of Water    |
|  | Limestone Ridge Hiking Trail |  | Paved Surface    |
|  | Paulinskill Valley Trail     |  | RVC Land         |
|  | Parking Lot                  |  | State NJDEP Land |



CONTOUR INTERVAL 10 FEET  
CARTOGRAPHY BY ANDREW LEIDICH, 2020

GPS Coordinates  
40.9748, -74.9575  
Givens-Belet  
American Legion  
Post

