

RULES AND REGULATIONS

Sunset Ridge Preserve is a conservation easement on privately-owned land. Public access is permitted only on the public hiking trail and the following rules apply:

Preserve Hours: Dawn till Dusk

- Follow Posted Signage at All Times
- Dogs Must Be on a Leash at All Times
- Pack Out All Trash and Dog Waste
- Stay On Marked Trails
- The Following Are Prohibited:
 - Hunting
 - Excessive Noise
 - Alcohol and Glass Containers
 - Camping and Fires
 - Collecting of Plants, Animals or Artifacts
 - Overnight Parking
 - Mountain Bikes
 - All-Terrain Vehicles
 - Horseback Riding

**IN THE EVENT OF AN EMERGENCY
CALL 911**

At over 200 acres, Sunset Ridge Preserve is predominantly mature deciduous forest mixed with conifers and rocky, wooded wetlands that skirt the tributary to Blair Creek at its northern border. Linear outcrops of shale, siltstone and sandstone host abundant mosses, sedges, and ferns throughout the property, and beautiful views of the Paulinskill Valley can be seen from higher elevations along the trail.

Sunset Ridge is part of a large, open-space greenway of preserved land that includes several RVC preserves and totals hundreds of acres. At its northernmost end, the Sunset Ridge Ravine trail connects with RVC's Birch Ridge Ravine trail corridor, which continues northward, ending at Birch Ridge Road. Hikers can park at either preserve's trailhead to enjoy a longer excursion. (See RVC's trail map for Birch Ridge Ravine for more information.)



**ADDRESS FOR PARKING AREA:
28 Butler Road, Hardwick NJ 07825***

*parking area located at very end of Butler Road by gate

**GPS COORDINATES:
41.0232, -74.9301**



Owl illustration by Jennifer Ramirez, 2019

RIDGE AND VALLEY CONSERVANCY



PO Box 146
16 Main Street, Blairstown, NJ 07825
(908) 362-7989
info@ridgeandvalleyconservancy.org

ABOUT US

Ridge and Valley Conservancy (RVC) is a private, non-profit land trust that preserves natural lands in northwestern New Jersey. We strive to practice sound ecological management of the lands we've protected, safeguarding sensitive habitats and the native species that inhabit them. Many RVC preserves have hiking trails, and we offer nature education, guided hikes, and other special events for the community and for schools. Learn more about us at ridgeandvalleyconservancy.org.

Scan this QR code to
see the trail map on
your device.



SUPPORT RVC!

Text MYRVC to 44-321
to donate
and help us care for
special places like this.

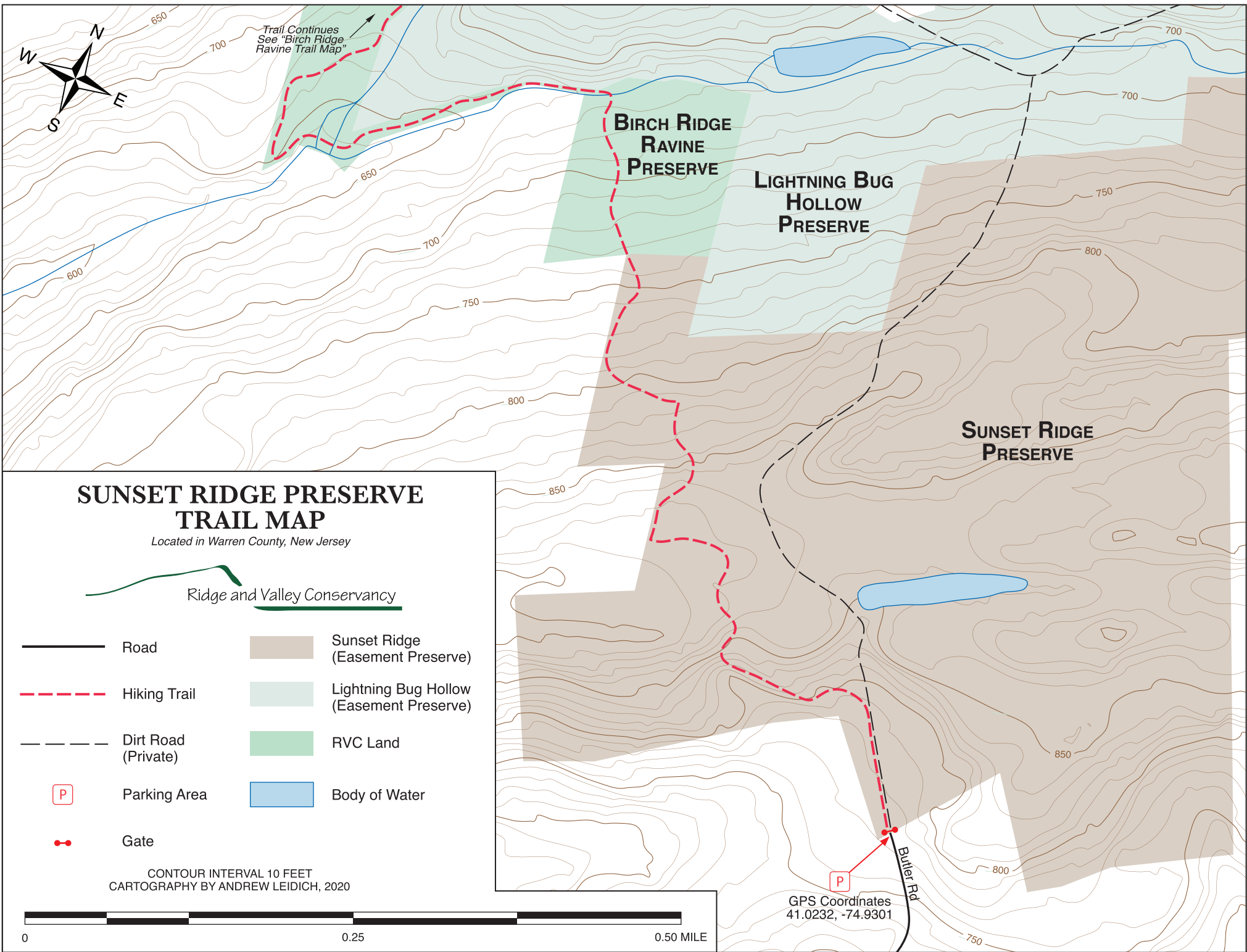
Thank You!

SUNSET RIDGE PRESERVE

TRAIL MAP




Ridge and Valley Conservancy



SUNSET RIDGE PRESERVE TRAIL MAP

Located in Warren County, New Jersey

Ridge and Valley Conservancy

- | | | | |
|---|---------------------|---|--|
| | Road | | Sunset Ridge (Easement Preserve) |
| | Hiking Trail | | Lightning Bug Hollow (Easement Preserve) |
| | Dirt Road (Private) | | RVC Land |
|  | Parking Area | | Body of Water |
| | Gate | | |

CONTOUR INTERVAL 10 FEET
 CARTOGRAPHY BY ANDREW LEIDICH, 2020



GPS Coordinates
 41.0232, -74.9301

Butler Rd